

CONTINUOUS FLOW ICE MAKER

WCC700E Series

Illustrated Parts List

Release Date: October 9, 2025
Publication Number: 620075165IPL
Revision Date: October 9, 2025
Revision: A

 **Marmon Foodservice
Technologies**
A Berkshire Hathaway Company

Visit the Cornelius web site at www.cornelius.com for all your Literature needs.



The products, technical information, and instructions contained in this manual are subject to change without notice. These instructions are not intended to cover all details or variations of the equipment, nor to provide for every possible contingency in the installation, operation or maintenance of this equipment. This manual assumes that the person(s) working on the equipment have been trained and are skilled in working with electrical, plumbing, pneumatic, and mechanical equipment. It is assumed that appropriate safety precautions are taken and that all local safety and construction requirements are being met, in addition to the information contained in this manual.

This Product is warranted only as provided in Marmon Foodservice Technologies' Commercial Warranty applicable to this Product and is subject to all of the restrictions and limitations contained in the Commercial Warranty.

Marmon Foodservice Technologies will not be responsible for any repair, replacement or other service required by or loss or damage resulting from any of the following occurrences, including but not limited to, (1) other than normal and proper use and normal service conditions with respect to the Product, (2) improper voltage, (3) inadequate wiring, (4) abuse, (5) accident, (6) alteration, (7) misuse, (8) neglect, (9) unauthorized repair or the failure to utilize suitably qualified and trained persons to perform service and/or repair of the Product, (10) improper cleaning, (11) failure to follow installation, operating, cleaning or maintenance instructions, (12) use of "non-authorized" parts (i.e., parts that are not 100% compatible with the Product) which use voids the entire warranty, (13) Product parts in contact with water or the product dispensed which are adversely impacted by changes in liquid scale or chemical composition.

Contact Information:

To inquire about current revisions of this and other documentation or for assistance with any Cornelius product contact:

www.marmonfoodservice.com

www.cornelius.com

800-238-3600

Trademarks and Copyrights:

This document contains proprietary information and it may not be reproduced in any way without permission from Marmon Foodservice Technologies.

This document contains the original instructions for the unit described.

MARMON FOODSERVICE TECHNOLOGIES INC
355 KEHOE BLVD
CAROL STREAM, IL
Tel: + 1 800-238-3600

Printed in U.S.A.



Recycle this manual.



TABLE OF CONTENTS

CLADDINGS MODEL 700EA CARBON SERIES..... 1

REFRIGERATION & ICEMAKER ASSY. 700EA & 700EA CARBON SERIES 2

CLADDINGS MODEL 700EA SERIES..... 3

WATER FLOAT ASSEMBLY 620054231 4

FRONT END ASSEMBLY MODEL 700E SERIES CHUNKLETS 5

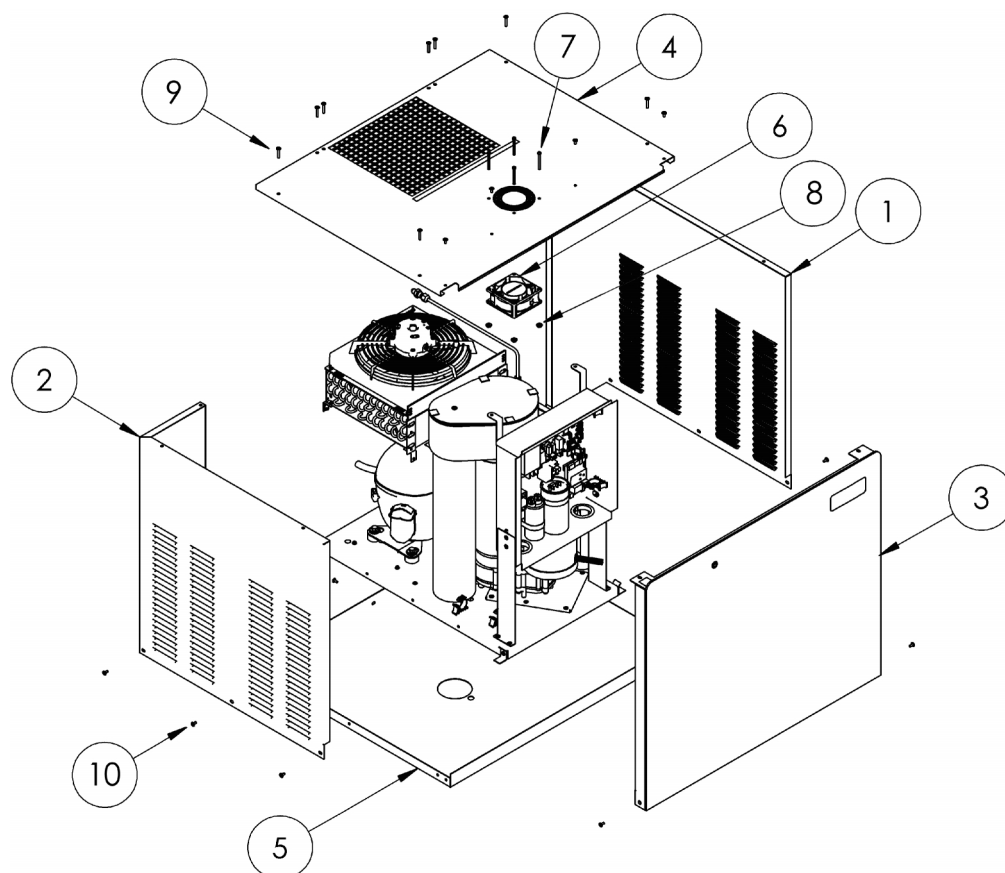
ELECTRICAL BOX ASSEMBLY MODEL 700E SERIES..... 6

WIRING HARNESS MODEL 700E SERIES 7



(Intentionally Blank Page)

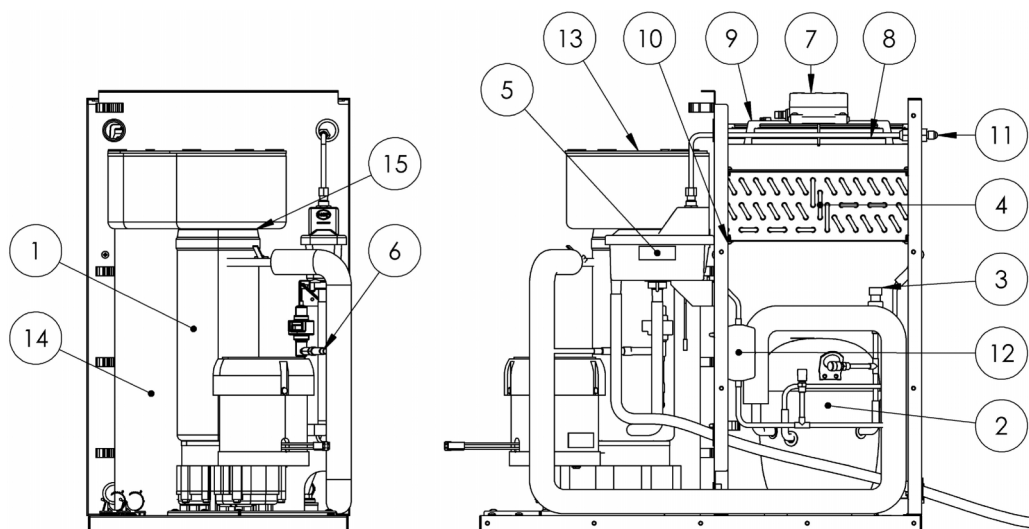
CLADDINGS MODEL 700EA CARBON SERIES



Item No.	Part No.	Description
1	620075046	PANEL, RH SIDE, WCC700EA CARBON
2	620075047	PANEL, LH SIDE, WCC700EA CARBON
3	620075050	ASSY, FRONT PANEL, WCC700EA CARBON
4	620075048	PANEL, TOP, WCC700EA CARBON
5	620075049	COVER, BOTTOM, WCC700EA CARBON
6	620075182	VENT FAN, WCC SERIES ICE MAKERS
7	630901579	8-32 X 1.75 LG PAPH SS
8	630900895	8-32 SS KEPS
9	161177000	8-32 X 1 LG TRPH SS
10	70171	8-32 X .375 LG TRPH SS

REFRIGERATION AND ICEMAKER ASSEMBLY

700EA & 700EA CARBON SERIES



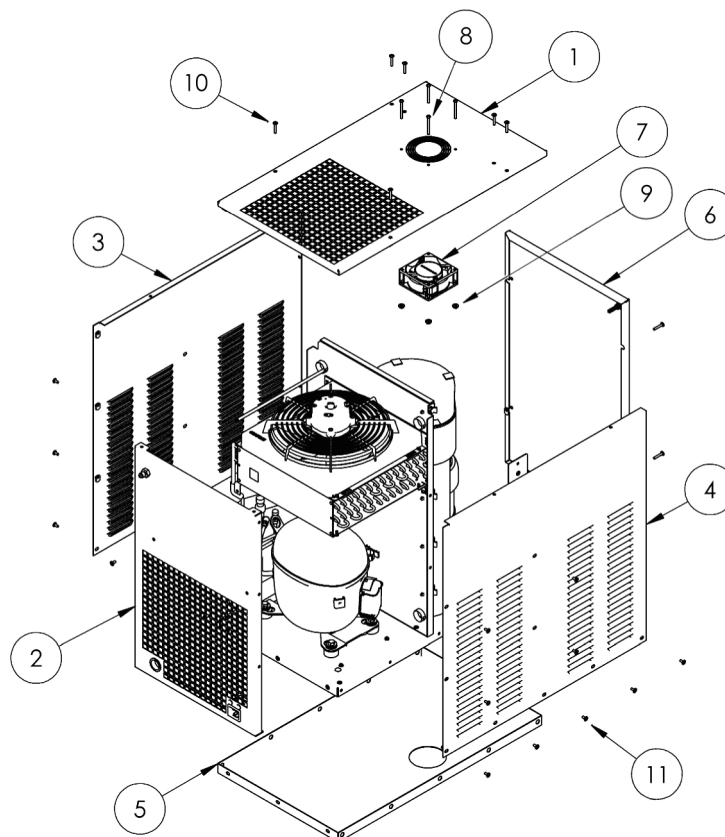
Item No.	Part No.	Description
1a & 1b	REF PAGE NO 5	AUGER ASSY & EVAPORATOR ASSY
2	620075032-001	KIT COMPRESSOR REPLACEMENT
3	620075086	PRESSURE TRANSDUCER, EEV, WCC700E
4	620075033	CONDENSER, WCC700EA
5	620054231 REF PAGE NO 4	WATER LEVEL CONTROL ASSEMBLY
6A	620075085	ELECTRONIC EXPANSION VALVE
6B	620075084	ELECTRONIC EXPANSION VALVE MOTOR
7	620075055	CONDENSER FAN MOTOR
8	620075056	CONDENSER FAN BLADE, WCC700EA
9	620075054	CONDENSER FAN SHROUD, WCC700EA
10	620075036	CONDENSER FAN BRACKET
11A	638008409	BULKHEAD FITTING
11B	620075034	WATER INLET TUBE
12	638004393	DRYER

13	630900942	COVER, DISPENSE TRAY
13A	638036867-001	CLIP COVER
13B	630001255	DISPENSE TRAY
14	63806213 & 638008193-12	DROP TUBE & INSULATION
15	638036087	CLAMP, DISPENSE TRAY
16*	23988	REPLACEMENT CAP
17*	630900953	THERMOSTAT WELL
18*	629097679	KIT ICE CHUTE INSTALLATION
19*	620054224	GROMMET COMPRESSOR
20*	620054255	SLEEVE COMPRESSOR
21*	620075087	EEV TEMPERATURE PROBE
22*	620075088	EEV PT HARNESS
23*	638006070	EVAP & DRAIN PLASTIC TUBE (5 FT.)

NOTE: * = Not Shown

CLADDINGS

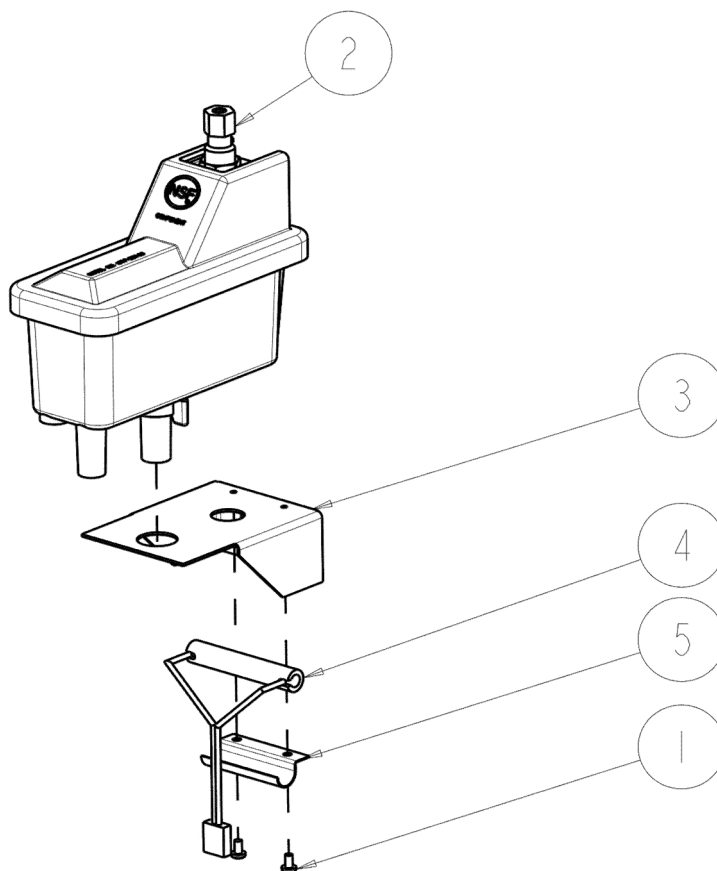
MODEL 700EA SERIES



Item No.	Part No.	Description
1	620074990	PANEL, TOP, WCC700EA
2**	620074989	PANEL, REAR, WCC700EA
3	620074994	PANEL, RH SIDE, WCC700EA
4	620074988	PANEL, LH SIDE, WCC700EA
5	620074987	COVER, BOTTOM, WCC700EA
6	620074991	PANEL, FRONT, WCC700EA
7	620075182	VENT FAN, WCC SERIES ICE MAKERS
8	630901579	8-32 X 1.75 LG PAPH SS
9	630900895	8-32 SS KEPS
10	161177000	8-32 X 1 LG TRPH SS
11	70171	8-32 X .375 LG TRPH SS

NOTE: ** = Also used on WCC700EA Carbon Series

WATER FLOAT ASSEMBLY 620054231

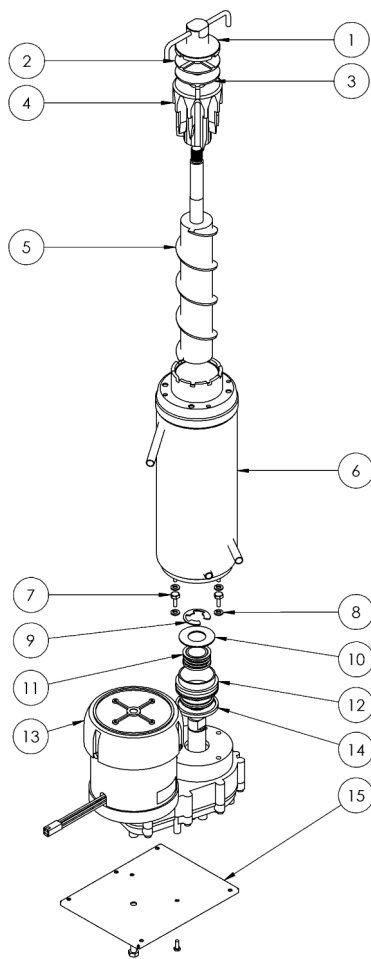


Item No.	Part No.	Description
1	161168017	SCREW #6-32
2	630900547	WATER LEVEL CONTROL ASSEMBLY
3	638004717	BRKT WATER LEVEL
4	638008483	REED SWITCH ASSEMBLY
5	638008097	CLAMP REED SWITCH
6*	638007972-02	SCREW 10X1/2 TYPE B HHWF FS

NOTE: * - Not shown., Used to secure assembly to icemaker.

FRONT END ASSEMBLY

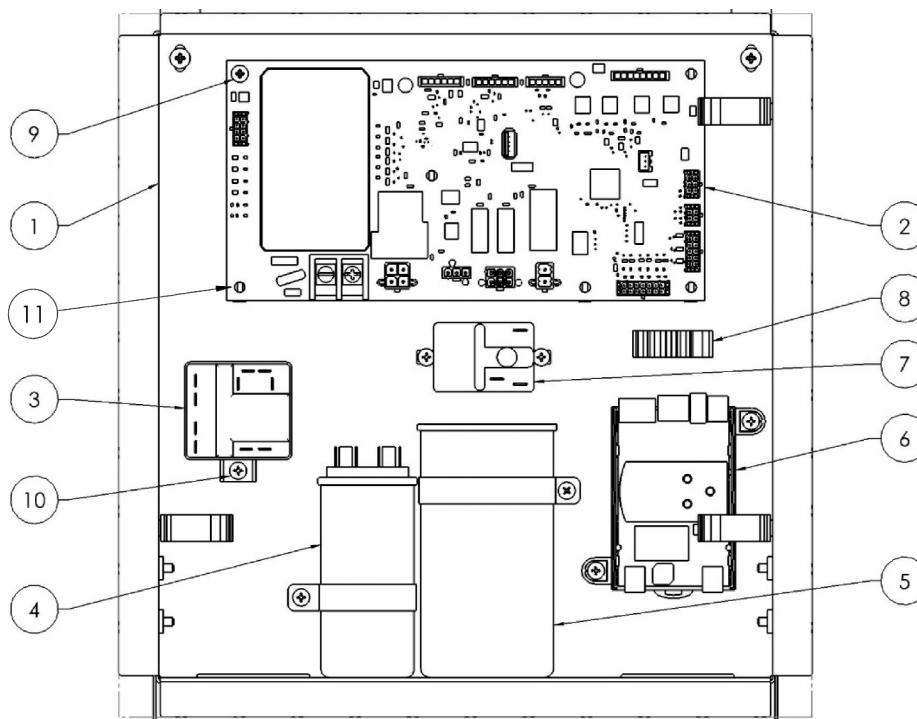
MODEL 700E SERIES CHUNKLETS



Item No.	Part No.	Name
(1A) Auger Assembly		
1	638090211	AUGER NUT
2	638090220	BEARING DELRIN
3	638090219	BEARING NYLON
4	630900608	EXTRUDING HEAD FOR CHUNKLET ICE
5	638090213	AUGER
(1B) Evaporator Assembly		
6	630000651	EVAPORATOR TUBE ASSY
7	161179001	SCREW 1/4-20 X 5/8 LG.

8	168833000	WASHER, LOCK 1/4 SPLIT
9	638090053	E-RING
10	638007301-030	WASHER, LOWER
11	638090051	SHAFT SEAL
12	638090215	SHAFT SEAL MOUNT
13	620075044-001	GEARMOTOR SERVICE KIT, 2.5 INCH EVAPORATOR
14	638090216	SHAFT SEAL SEAT
15	638036218	BRACKETING MOUNT

ELECTRICAL BOX ASSEMBLY MODEL 700E SERIES



Item No.	Part No.	Name	Qty.
1	620075035	REAR PANEL, EBOX, WCC700EA	1
2	80013-PCBA-01	PCBA, ICE MAKER PLATFORM, FULL POP VARIANT	1
3	620075041	START RELAY, COMPRESSOR, R290	1
4	620075039	CAPACITOR, COMPRESSOR RUN	1
5	620075040	CAPACITOR, COMPRESSOR START	1
6	620075089	EEV CONTROLLER, PROGRAMMED, WCC700E	1
7	638041922	GEAR MOTOR RELAY	1
8	620054736	ADJUSTABLE WIRE CLAMP HARNESS	3
9	318733000	SCREW MA 06-32 TRPH 10 SS	1
10	342663000	8-32 THREAD CUTTING SCREW	7
11	325925000	PCB STANDOFFS	4



WIRING HARNESSES

MODEL 700E SERIES

Item No.	Part No.	Name	Qty.
1	85003-01	CABLE, ICE MAKER, AUGER MOTOR	1
2	85005-01	CABLE, ICE MAKER, PANEL INDICATOR	1
3	85009-01	CABLE, ICE MAKER, PRESSURE SWITCH BYPASS JUMPER	1
4	85012-01	CABLE, ICE MAKER, WCC ICE BIN THERMISTOR	1
5	85013-02	CABLE, ICE MAKER, WCC, WATER "SOLD OUT" FLOAT SWITCH	1
6	85014-01	CABLE, ICE MAKER, WCC, COMPRESSOR POWER	1
7	85015-01	CABLE, COMPRESSOR WIRING JUMPER, 12AWG BLUE	1
8	85016-01	CABLE, WCC BOARD COMPRESSOR POWER	1
9	85024-01	CABLE, ICE MAKER, PANEL LED TO CONTROL	1
10	85025-01	CABLE, ICE MAKER, EEV CONTROLLER	1
11	85026-01	CABLE, COMPRESSOR WIRING JUMPER, 12AWG YELLOW	1
12	85027-01	CABLE, COMPRESSOR WIRING JUMPER, 12AWG RED	1
13	85028-01	CABLE, ICE MAKER, WCC, EXHAUST FAN POWER	1
14	85029-01	CABLE, ICE MAKER, WCC, POWER INLET	1

NOTE: = No wiring harnesses shown in views. Refer to Wiring Diagram for routing.

Marmon Foodservice Technologies Inc.
www.marmonfoodservice.com
www.cornelius.com