

INSTALLATION INSTRUCTIONS

SAFETY INSTRUCTIONS

WARNING:

Before starting installation, read and understand all safety label and warnings on the machine. Also review and understand all safety instructions in the owners, installation and service manuals.

Failure to comply could result in serious injury, death or damage to the equipment.

QUALIFIED SERVICE PERSONNEL

WARNING:

Only trained and certified electrical, plumbing and refrigeration technicians should service this unit.

All wiring and plumbing must conform to national and local codes. Failure to comply could result in serious injury, death or equipment damage.

SAFETY PRECAUTIONS

This unit has been specifically designed to provide protection against personnel injury. To ensure continued protection observe the following:

WARNING:

Disconnect power to the unit before installing the adaptor following all lockout/tag out procedures established by the user. Verify that all the power is off to the unit before performing any work.

Failure to comply could result in serious injury, death or damage to the equipment.

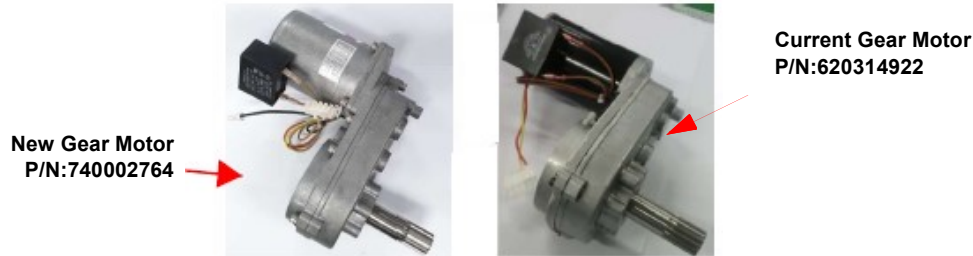
CAUTION:

Always be sure to keep area around the unit clean and free of clutter.

Failure to keep this area clean may result in injury or equipment damage.

DF/ED200 AND 250 NEW AGITATOR GEAR MOTOR

The current DF/ED 200 and 250 agitator gear motor (P/N:620314922) is being replaced with a new gear motor (P/N:740002764) due to high cost increases associated with the current gear motor. This change will take place in late July – early August 2005, after inventory is used. Then, new DF/ED 200 and 250 dispensers will be fitted with the new gear motor.



Note that the new gear motor is smaller than the current gear motor.

Description:

The new gear motor will operate at 6 RPM versus 7 RPM, which will have negligible effect on ice dispense and agitation. No timing changes or ice gate adjustments will be required when replacing a gear motor in the field. The new gear motor is not backward compatible. A kit (P/N:740002799) consisting of the parts listed below will be required for gear motor replacement in the field. Once the motor has been upgraded, replacement motor (P/N:740002764) can be ordered for replacement. A gear motor ordered under the current P/N 620314922 will be filled with the motor kit that includes the needed parts plus the gear motor.

Parts List for Kit Number 629088531

Part Number	Description	Qty
740002764	New Offset Agitator Gearmotor	1
620073889	Bracket Assembly Motor Mount	1
620073890	Motor Strap	1
150774000	Wing Nut	1
70068	Lock Washers	3
71028	Bolts 1/4-20	2
620710906	Washer	1

Installation

Below is the procedure to be followed when replacing the current gear motor with the new gear motor.

1. Unplug the dispenser.
2. Remove the ice from the dispenser.
3. Remove agitator from the ice bin.
4. Remove splash plate.

5. Remove wing nut, washer, lock washer, and bar/strap.

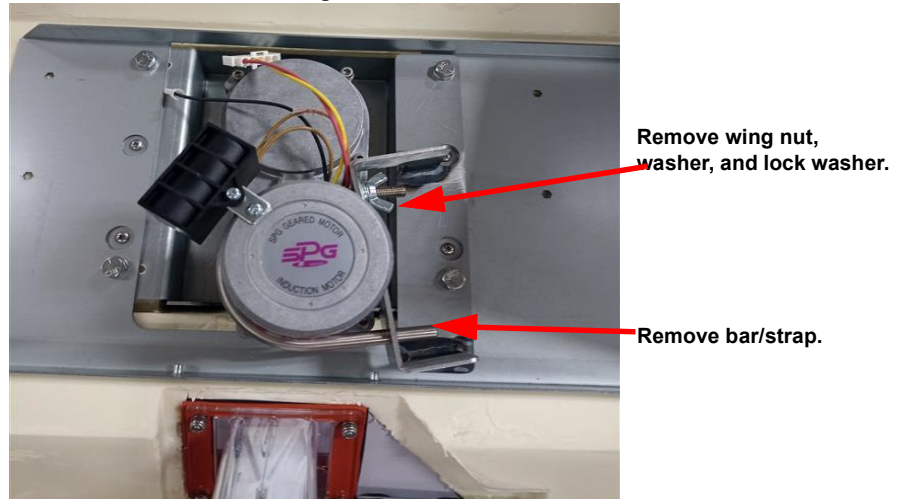


Figure 1.

6. Remove current agitator gear motor.
- Unplug wires and ground.
 - Rotate motor clockwise 5° - 10°.
 - Pull motor straight out.

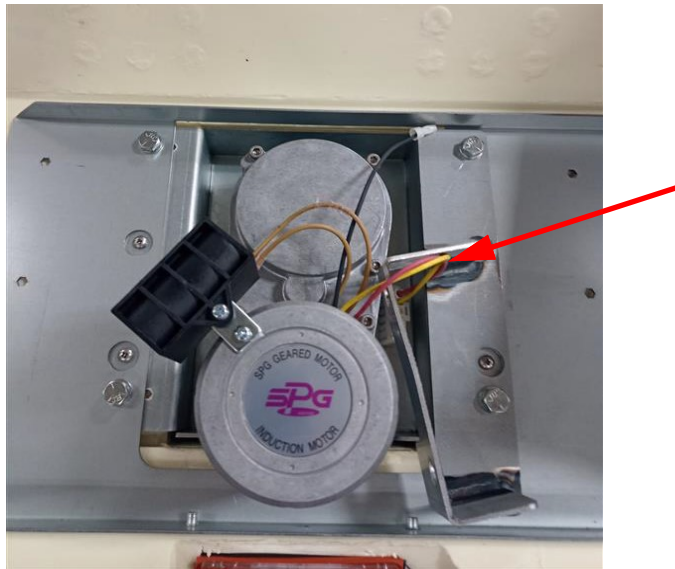
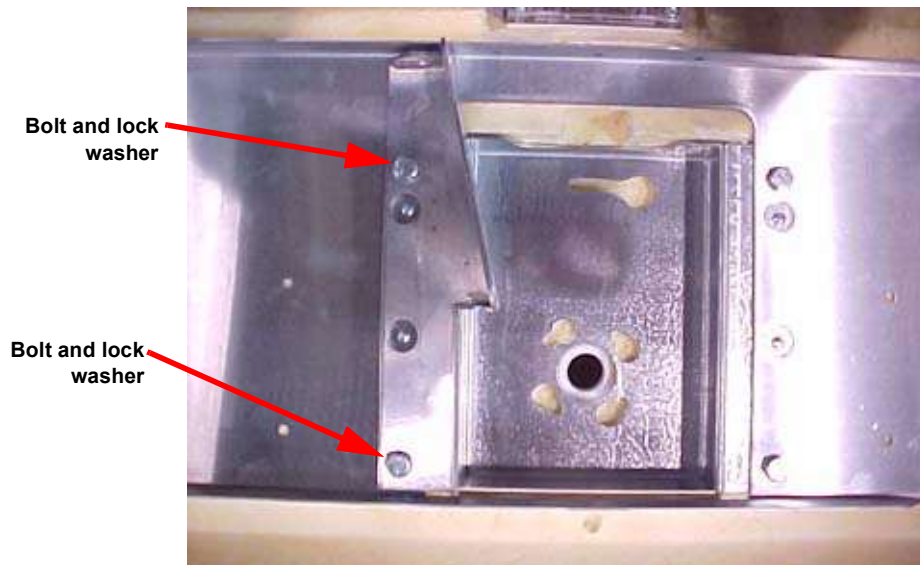


Figure 2.

7. Remove old bracket (9/16 socket will fit the bolts).



8. Bolt the new bracket into the holes used by the old bracket. New bolts and lock washers are included in kit.

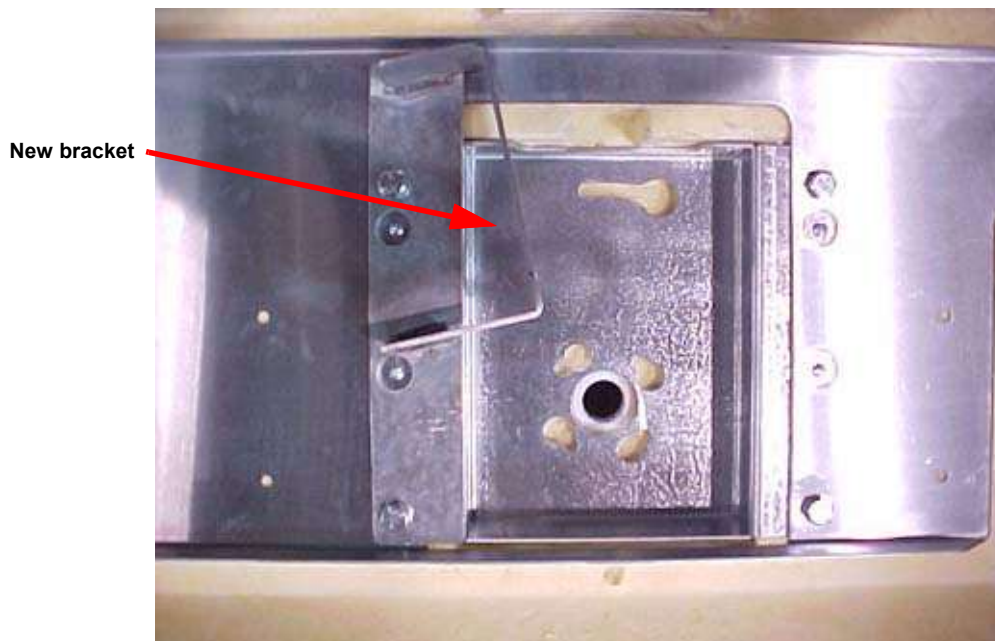


Figure 3.

9. Install new agitator gear motor.

Insert motor pins into key holes (5-10 degrees offset).

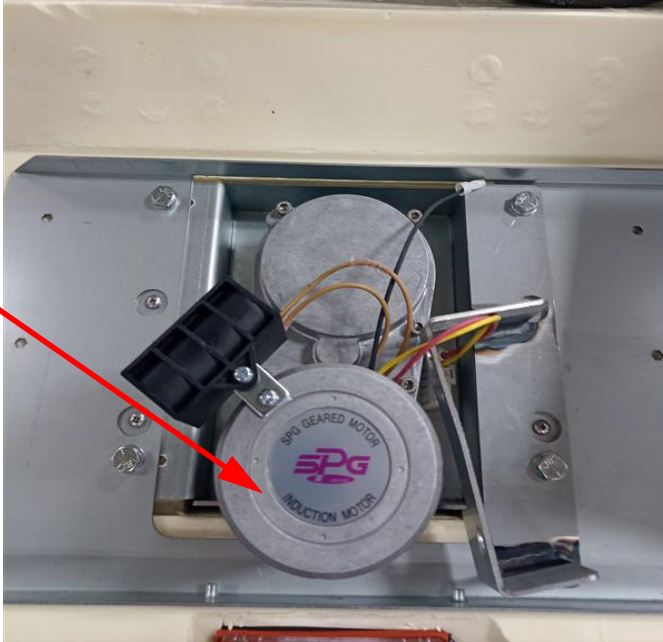


Figure 4.

10. Rotate gear motor into place.

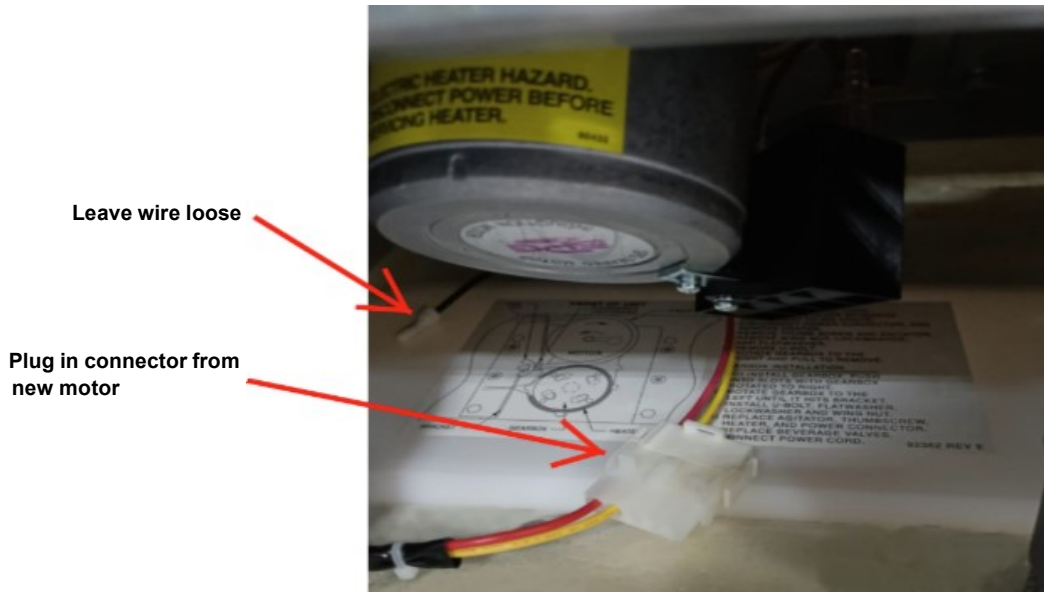
Rotate motor counterclockwise until it contacts the new bracket.



Figure 5.

11. Connect new motor wires.

12.



13. Install the bar/strap.

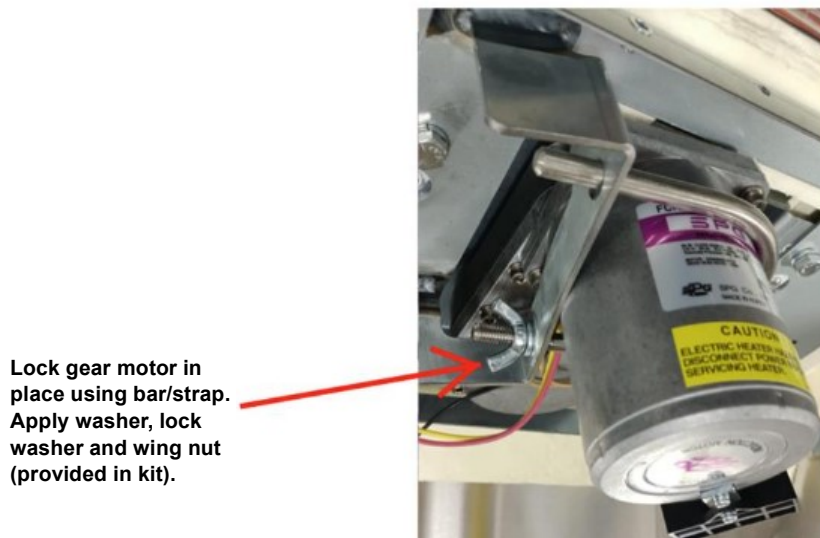


Figure 6.

- 14. Plug the dispenser in and check that the agitator gear motor turns when the ice dispense is activated.
- 15. Unplug the dispenser and replace the agitator and splash plate.
- 16. Refill the ice bin, plug in the dispenser and check for proper ice dispense.

FOR ADDITIONAL INFORMATION CONTACT:

Table 1:

PhoneFix® - Primary	Customer Service Operations	Sales Equipment Engineering
(800) 817-2653	Glenn Dickerson 678-461-2152	Geoffrey Coulborn 404-676-0908