



# Automated Crew-Serve Dispenser (ACSD)

## Fountain Beverage Dispenser

6210588XX

*Specification Sheet*



## Features

### **Proven Reliability**

Over 25 years of demonstrated performance providing automated beverage equipment in high-speed environments.

### **Speed of Service**

Improve serve time to increase throughput, streamline operations, and create repeat business.

### **Labor Redeployment**

Free-up valuable crew member time and redirect resources to support food assembly, payment, or enhanced customer experience.

### **Operational Efficiencies**

Unlock your team's potential by simplifying operations. Crew can concentrate on high-value tasks and reprioritize their workload.

### **Drink Accuracy**

Deliver the perfect ice-beverage ratio thanks to patented technology and point of sale integration to ensure order accuracy while reducing waste and standardizing the cost of goods.

### **Ease of Use**

Intuitive and ergonomic design with a touchscreen interface, step-by-step cleaning and setup instructions, and full POS integration. ACSD streamlines operations, reduces errors, and enhances efficiency, optimizing performance and maximizing uptime.

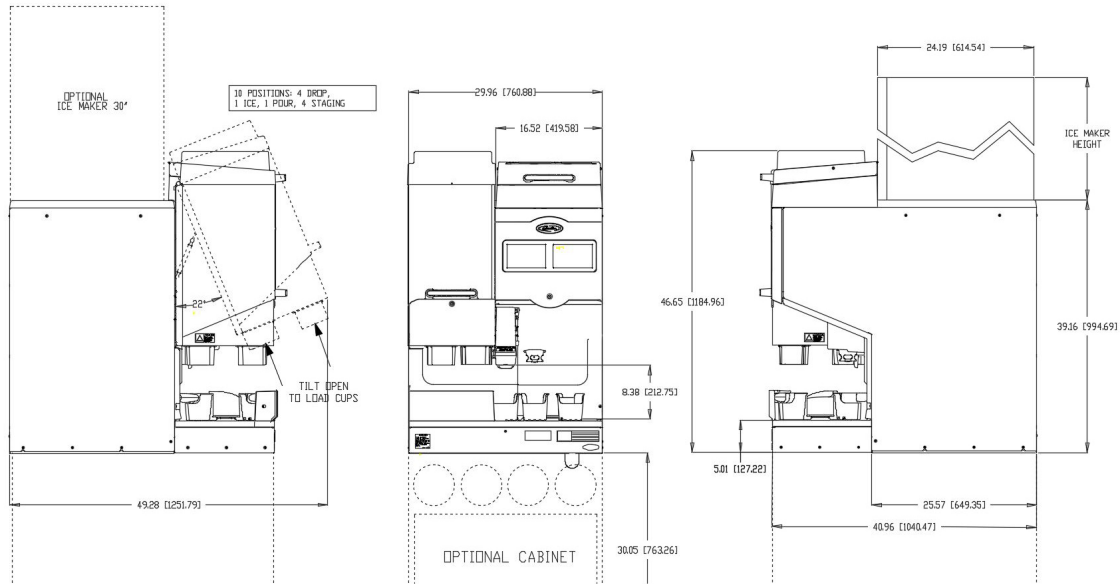


# Automated Crew-Serve Dispenser (ACSD)

## Fountain Beverage Dispenser

6210588XX

Specification Sheet



### Technical Specification

|  |  |
|--|--|
| <b>US Electrical Requirements</b>            | 115v, 60hz, 3A   |
| <b>International Electrical Requirements</b> | 220-240v, 50/60hz, 3A  |
| <b>Electrical Outlets</b>                    | Dispenser 1<br>Carbonator Pump Deck 1<br>Water Booster (sold separately) 1 |
| <b>Installation</b>                          | Countertop or Stand<br>(available as an accessory)                         |
| <b>Dimensions</b>                            | 47"H x 30"W x 41"D<br>(119.38cm x 76.20cm x 101.60cm)                      |
| <b>Weight</b>                                | 480lb (217.72 kg)  |
| <b>Shipping Dimensions</b>                   | 55"H x 37"W x 49"D<br>(139.70cm x 93.98cm x 124.46cm)                      |
| <b>Shipping Weight</b>                       | 550lbs (249.48kg)  |
| <b>Shipping Cubic Dimensions</b>             | 57.71ft <sup>3</sup> (1.63m <sup>3</sup> )                                 |
| <b>Ice Capacity</b>                          | 215lbs (97.52kg)   |

|                              |   |
|------------------------------|---|
| <b>Ice Dispenser</b>         | Fast-gate actuation   |
| <b>Ice Bin Top Width</b>     | 30 in.  |
| <b>Valve Type</b>            | MFV   |
| <b>Syrups</b>                | 12 chilled brands (+ 4 ambient or flavors - sold separately)  |
| <b>Water</b>                 | Carbonated or plain water dispense (US)   |
| <b>Pressure Requirements</b> | Brands: 65-75 psi<br>Flavors: 30-45 psi if < 50', 55 psi max if > 50'<br>Water: 80-100 psi boosted, regulated to 55-65 psi at pump deck<br>CO <sub>2</sub> : 90-100 psi bulk, regulated to 75 psi at pump deck and 35 psi for Fast-gate (both of these regulators are included) |
| <b>Cup Dispense Style</b>    | Positive lip  |
| <b>Cup Storage Capacity</b>  | 4 full sleeves  |
| <b>Carousel Cup Holders</b>  | 10 total, 4 staging positions after dispense  |
| <b>Cup Dimensions</b>        | Max height: 7.75" for cup clearance   |
| <b>Certifications</b>        | UL, cUL, NSF approved - CE pending  |

| Part Number | Description                                       |
|-------------|---|
| 6210588XX   | ACSD - Inquire for your appropriate configuration |

| Accessories | Description   |
|-------------|---|
| 621058802   | ACSD Accessory Cart. 29"Height, with 4 lid holders included |

Inquire for your appropriate configuration.

To learn more about **Fountain Beverage Dispenser**<sup>®</sup>, visit [cornelius.com](http://cornelius.com)