



Chunklet WCC700 Modular Continuous - Water Cooled

Ice Maker

569200026

Specification Sheet



Features

Small Footprint

Available compact design, only 14.5" wide.

High-Yield

Ideal for use in demanding, high volume applications.

Efficient

Uses 100% of water.

Stainless Steel Exterior

Durable and corrosion-free.

Environmentally Responsible

Energy efficient and uses CFC-free, R404A refrigerant.

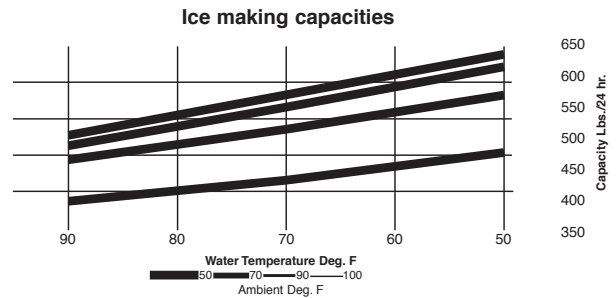
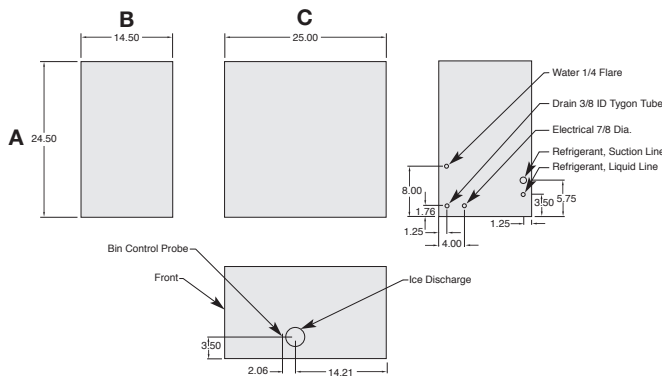
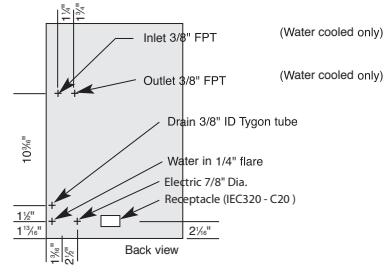
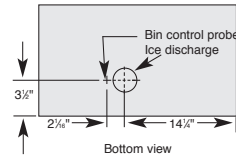


Chunklet WCC700 Modular Continuous - Water Cooled

Ice Maker



569200026

Specification Sheet



Technical Specification

| | |
|--------------------------------|--------------------------------------------------------------------|
| Product Category | Ice |
| Description | 700 Series Modular Continuous Chunklet WCC700A |
| Water Pressure Required | 10 to 90 psi |
| Ambient temperature | 50°F to 104°F |
| Type of Condenser | Air Cooled |
| Min. Circuit | 25 Amps |
| Installation | Countertop or Stand (available as an accessory) |
| Dimensions | 14.5 in (36.83 cm) x 25 in (63.5 cm) x 25 in (63.5 cm) (W x D x H) |

| | |
|---------------------------------|-------------------------------------------------------------------------------------------------------------------------------------------------------------------------------------|
| Shipping Weight | 158 lb (72 kg) |
| Type of Machine | Modular |
| Ice Production 90/70 lb | 513 lb (233 kg) |
| Electricals Requirements | 115 V / 60 Hz / 1 Phase |
| Compressor/Refrigerant | R404A |
| Ice Production 70/50 lb | 616 lb (279 kg) |
| Ice Type | Nugget |
| Kits | 630900338 - 35' Line set Use with WCU700 |
| Agency Listings | UL, NSF   |

| Part Number | Description |
|-------------|------------------------------------------------|
| 569200026 | 700 Series Modular Continuous Chunklet WCC700A |

To learn more about **Ice Maker**, visit cornelius.com