



Chunklet WCC700 Modular Continuous Carbon - Water Cooled Ice Maker

621058726

Specification Sheet



Features

Carbon Look

Aesthetically pleasing look with black plastic front cladding.

High-Yield

Ideal for use in demanding, high volume applications.

Efficient

Uses 100% of water.

Stainless Steel Exterior

Durable and corrosion-free.

Environmentally Responsible

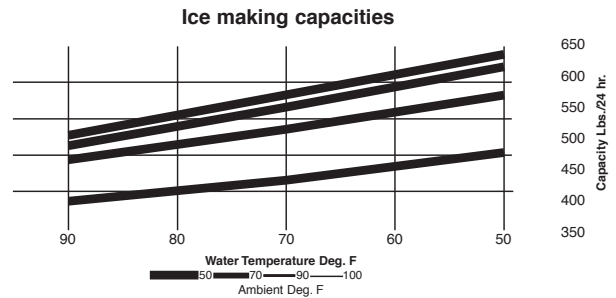
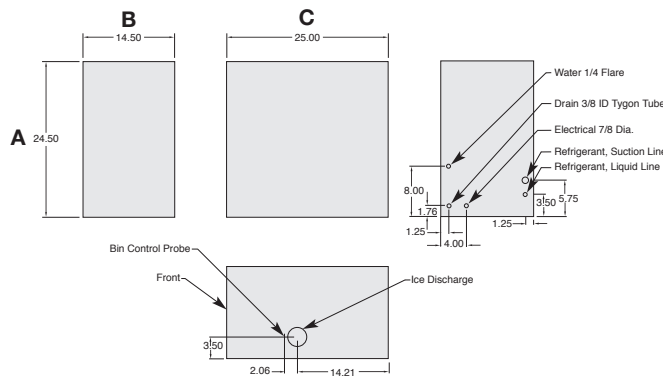
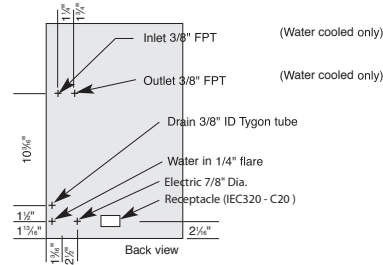
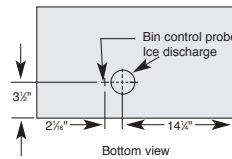
Energy efficient and uses CFC-free, R404A refrigerant.



Chunklet WCC700 Modular Continuous Carbon – Water Cooled Ice Maker



621058726

Specification Sheet



Technical Specification

Product Category	Ice
Description	700 Series Modular Continuous Chunklet WCC700A Carbon
Water Pressure Required	10 to 90 psi
Ambient temperature	50°F to 104°F
Type of Condenser	Air Cooled
Min. Circuit	25 Amps
Installation	Countertop or Stand (available as an accessory)
Dimensions	30 in (76.2 cm) x 24 in (61 cm) x 24.5 in (62.23 cm) (W x D x H)

Shipping Weight	212 lb (96 kg)
Type of Machine	Modular
Ice Production 90/70 lb	513 lb (233 kg)
Electricals Requirements	115 V / 60 Hz / 1 Phase
Compressor/Refrigerant	R404A
Ice Production 70/50 lb	616 lb (279 kg)
Ice Type	Nugget
Agency Listings	UL, NSF  

Part Number	Description
621058726	700 Series Modular Continuous Chunklet WCC700A Carbon

To learn more about **Ice Maker**, visit cornelius.com